

NOTICE TO MARINERS

06.09.2017

DUDGEON OFFSHORE WIND FARM CONSTRUCTION WORKS

NOTICE IS HEREBY GIVEN that construction activities are in progress at the Dudgeon Offshore Wind Farm.

Wind turbine generators will be installed until Q3 2017. All construction work is planned to be completed late 2017.

Service Operation Vessel

The ESVAGT NJORD will be performing preparation support for the operation of the wind farm and will be in regular transit between the Dudgeon site and Great Yarmouth.

Wind Turbine Generator Installation

The SEA CHALLENGER will perform installation of the wind turbine generators (WTG) from January 2017 until Q3-2017. WTG installation and commissioning work will be performed at the following locations in August - September:

Location	Easting	Northing	Lon DD	Lat DD	Depth LAT [m]
Sub-Station	391 870	5 902 955	1,378776	53,264808	-21,1
L01	391 174	5 901 522	1,368835	53,251789	-21,0
L02	391 122	5 900 148	1,368526	53,239433	-19,9
L03	391 760	5 899 631	1,378257	53,234918	-20,2
L04	392 399	5 899 114	1,388002	53,230402	-21,0
L05	393 038	5 898 596	1,397745	53,225877	-20,6
K01	392 045	5 902 246	1,381639	53,258473	-21,5
K02	391 907	5 900 928	1,380019	53,246602	-21,2
K03	392 640	5 900 334	1,391200	53,241413	-20,8
K04	393 373	5 899 739	1,402378	53,236214	-21,0
K05	393 676	5 898 079	1,407470	53,221359	-21,8
T01	392 212	5 903 533	1,383706	53,270071	-21,5
T02	392 948	5 902 936	1,394938	53,264856	-22,1
T03	394 241	5 900 466	1,415137	53,242920	-21,8
T04	394 974	5 899 873	1,426312	53,237737	-22,3
T05	394 840	5 898 551	1,424742	53,225832	-21,2

Location	Easting	Northing	Lon DD	Lat DD	Depth LAT [m]
J01	392 777	5 901 653	1,392808	53,253293	-23,1
J02	393 509	5 901 060	1,403974	53,248112	-22,5
J03	394 107	5 899 145	1,413569	53,231024	-21,7
J04	394 315	5 897 562	1,417208	53,216841	-22,3
J05	394 954	5 897 045	1,426945	53,212322	-21,2
F01	392 353	5 904 837	1,385377	53,281817	-21,7
F02	393 254	5 905 526	1,398654	53,288190	-23,2
F03	392 649	5 906 016	1,389417	53,292470	-22,8
F04	392 044	5 906 506	1,380177	53,296750	-22,4
F05	391 439	5 906 996	1,370936	53,301030	-22,0
F06	390 834	5 907 486	1,361693	53,305308	-22,3
E01	391 477	5 904 129	1,372486	53,275276	-22,2
E02	391 619	5 905 431	1,374170	53,287004	-22,4
E03	390 886	5 906 025	1,362975	53,292191	-20,7
E04	390 153	5 906 619	1,351778	53,297377	-20,6
E05	390 229	5 907 976	1,352448	53,309586	-21,5
E06	389 624	5 908 466	1,343201	53,313863	-21,1
D01	390 741	5 904 726	1,361247	53,280489	-21,7
D02	390 006	5 905 323	1,350022	53,285702	-20,9
D03	389 271	5 905 920	1,338793	53,290913	-20,1
D04	389 420	5 907 213	1,340577	53,302562	-20,2
D05	388 971	5 907 930	1,333591	53,308910	-20,3
D06	388 265	5 907 463	1,323165	53,304566	-20,3
B01	391 313	5 902 840	1,370468	53,263661	-21,5
B02	390 441	5 902 117	1,357649	53,256985	-19,9
B03	389 708	5 902 711	1,346460	53,262170	-20,5
B04	388 975	5 903 306	1,335268	53,267364	-19,3
B05	388 041	5 904 311	1,320916	53,276197	-18,2
B06	387 985	5 903 523	1,320354	53,269105	-18,2
G02	394 465	5 904 546	1,417139	53,279626	-23,6
G03	395 070	5 904 056	1,426371	53,275343	-24,3
G04	395 675	5 903 566	1,435601	53,271060	-25,1
G05	396 281	5 903 077	1,444844	53,266785	-26,4
G06	396 225	5 902 259	1,444272	53,259423	-25,6
H01	393 086	5 904 243	1,396567	53,276627	-21,4
H02	393 820	5 903 649	1,407769	53,271438	-23,5
H03	394 553	5 903 055	1,418953	53,266246	-23,9
H04	395 287	5 902 461	1,430149	53,261054	-24,4
H05	395 204	5 901 199	1,429321	53,249698	-22,5
H06	396 170	5 901 440	1,443715	53,252053	-24,5
A01	390 483	5 900 665	1,358777	53,243947	-19,5
A02	389 845	5 901 183	1,349042	53,248469	-19,6
A03	389 206	5 901 700	1,339289	53,252982	-19,0
A04	388 568	5 902 218	1,329549	53,257502	-19,2

Location	Easting	Northing	Lon DD	Lat DD	Depth LAT [m]
A05	387 929	5 902 735	1,319792	53,262013	-18,8
C01	390 580	5 903 434	1,359278	53,268847	-20,1
C02	389 848	5 904 027	1,348102	53,274024	-19,8
C03	389 117	5 904 621	1,336937	53,279209	-19,4
C04	388 097	5 905 099	1,321478	53,283289	-19,4
C05	388 153	5 905 887	1,322040	53,290382	-19,4
C06	388 209	5 906 675	1,322602	53,297474	-20,0

COORDINATE REFERENCE SYSTEM:

Datum: WGS84

Projection: UTM Zone 31N

Survey Vessel

The M/V ICEBEAM shall perform Post Construction survey and will be working on location during September 2017.

Accommodation Vessel

The VESTLAND CYGNUS will be on location until Q4-2017 as accommodation vessel for Turbine commissioning.

Commissioning activities

For the commissioning and construction work there are several Crew Transfers Vessels operating in the wind farm area on a daily basis. This activity is ongoing and will continue until commissioning completes in Q4 2017.

Guard Vessel

One of the vessels; RESOLUTE, ADVENTURE, or KRISTENBORG will be present at the site to safe guard the wind farm area.

GENERAL

MARINERS ARE HEREBY INFORMED; that a statutory construction Safety Zone (exclusion zone) is in place at the wind farm site. This safety zone is defined by:

- A 500 metres radius around each wind turbine, offshore sub-station and their foundations whilst work is being performed as indicated by the presence of construction vessels; and
- A 50 metres radius around each wind turbine, the offshore sub-station platform and associated foundation structures installed, complete or incomplete but waiting to be commissioned as part of the Dudgeon offshore wind farm where personnel are present on, or are being landed on or being taken from the structures.

All vessels will exhibit appropriate lights and shapes prescribed by the International Regulations for Preventing Collisions at Sea.

ALL VESSELS ARE REQUESTED to give all construction and support vessels a wide berth.

MARINERS ARE ADVISED to navigate with caution and keep continued watch on VHF Ch. 16 when navigating the area.

A further notice to mariners will be issued when these works are completed, expected autumn 2017.

Please direct any enquiries regarding this notice to Statoil Wind Control Centre: statoilwindcontrol@statoil.com

A copy of this notice can also be found at:

<http://dudgeonoffshorewind.co.uk/news/notice-to-mariners>

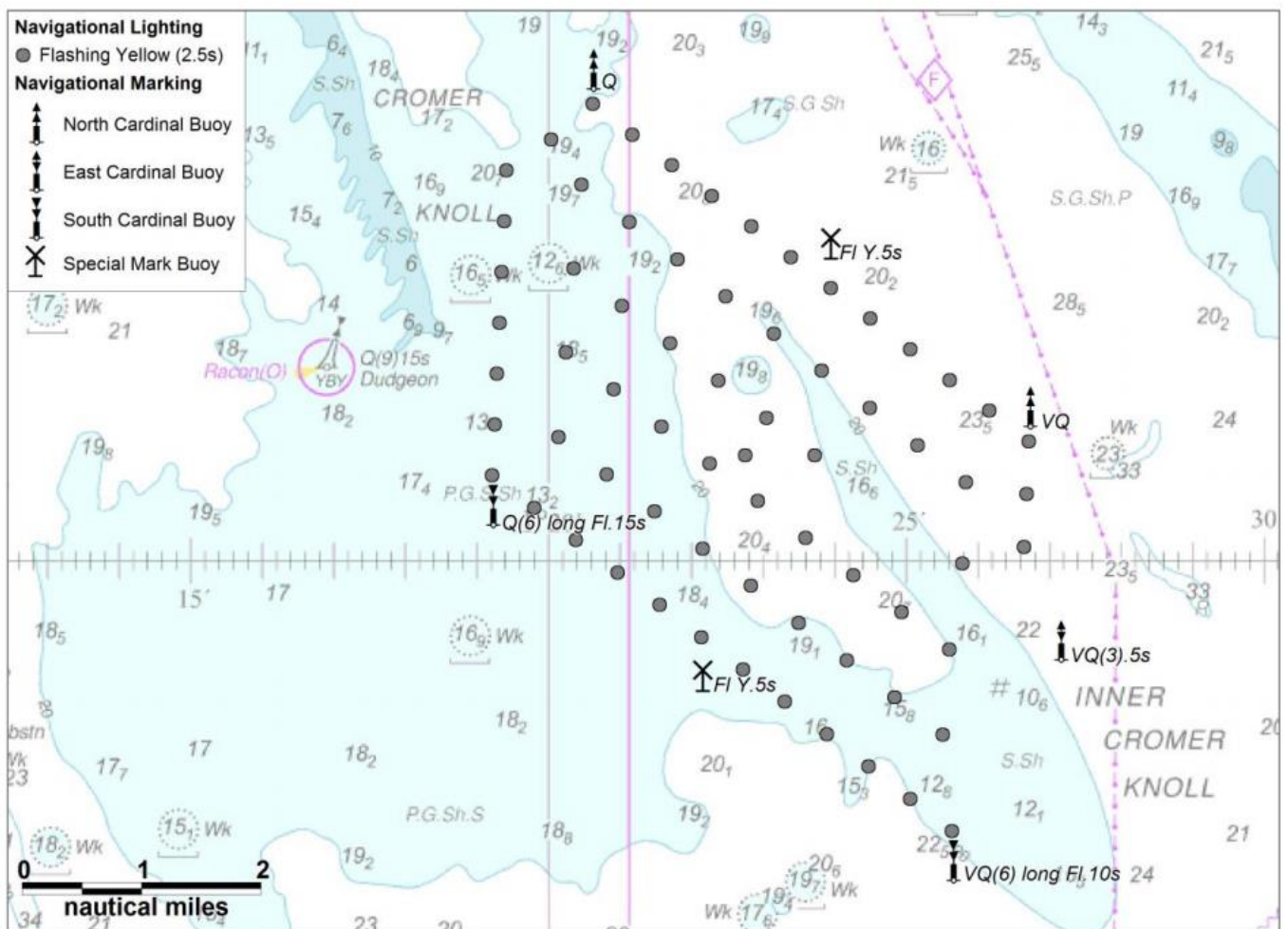
Fishing

The Dudgeon Wind Farm area is closed to fishing. The coordinates for the area of the closed area are included below.

SITE DETAILS

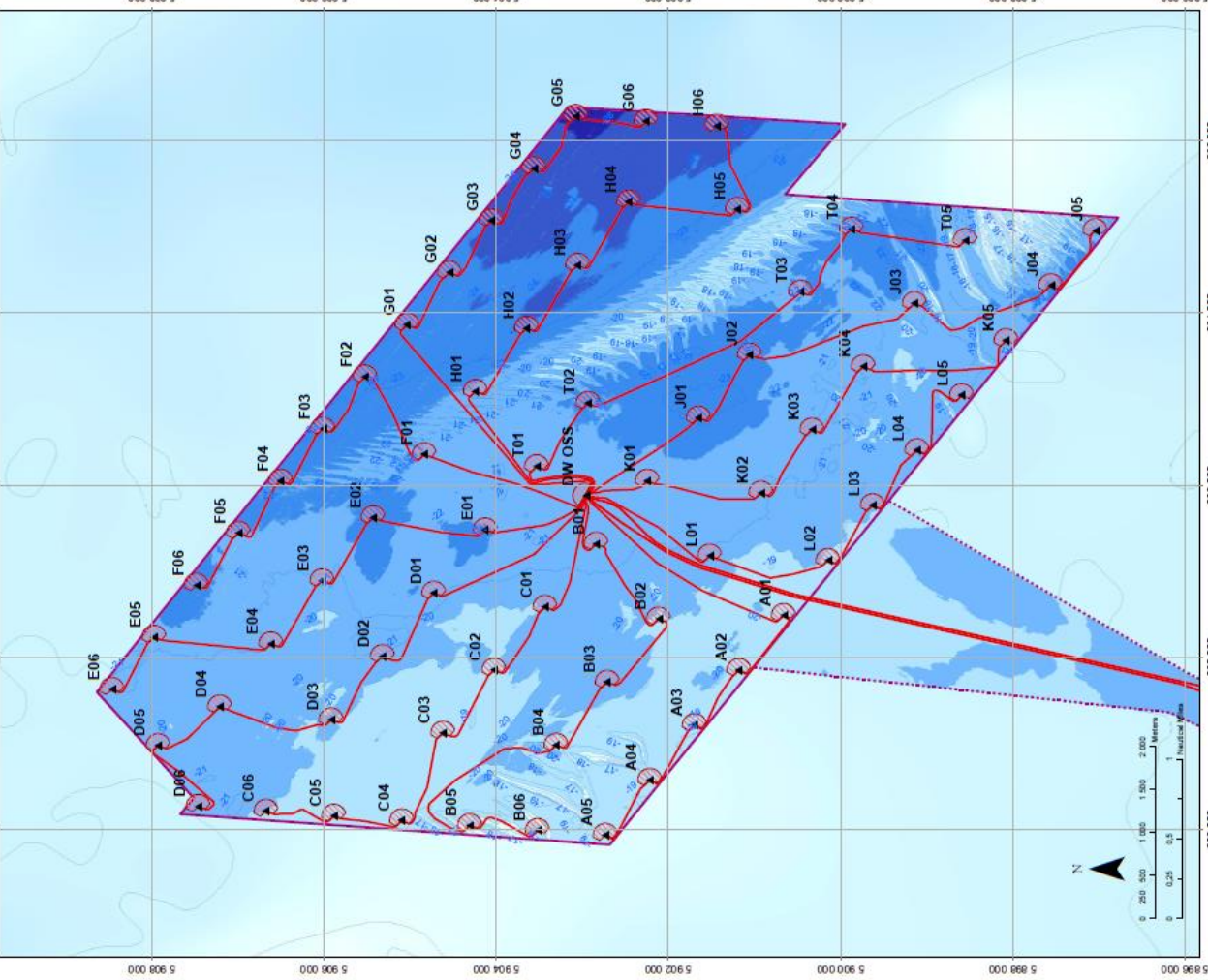
Position of Navigation Buoys demarcating the Dudgeon Offshore Wind Farm site

Mark	Location	Name	Latitude	Longitude	Status	Flash Character	Code	Range
North Cardinal	NW Cardinal	N-DOW	53° 19,102' N	1° 20,592' E	Temporary	Q	601	5nm
Special Mark	Special Mark North	DOW - SM - N	53° 17,631' N	1° 23,919' E	Temporary	Fl.Y.5s	328	5nm
North Cardinal	North East Cardinal	NE - DOW	53° 16,277' N	1° 26,691' E	Temporary	VQ	501	5nm
East Cardinal	East Cardinal	E- DOW	53° 14,320' N	1° 27,123' E	Temporary	VQ(3).5s	508	5nm
South Cardinal	SE Cardinal	S - DUDGEON	53° 12,470' N	1° 25,617' E	Permanent	VQ(6) long Fl.10s	516	5nm
Special Mark	Special Mark South	DOW - SM - S	53° 14,012' N	1° 22,132' E	Temporary	Fl.Y.5s	328	5nm
South Cardinal	SW Cardinal	SW - DOW	53° 15,451' N	1° 19,188' E	Temporary	Q(6) long Fl.15s	631	5nm



WTG ID and locations (coordinates)

WTG and Substation Locations			
WTG ID	Easting	Northing	Depth LAT
A01	380483.0	500066.0	1.38777
A02	388945.0	501153.0	1.34042
A03	389206.0	500700.0	1.33629
A04	385588.0	500218.0	1.32849
A05	387628.0	500278.0	1.31872
A06	391131.0	500470.0	1.32786
B01	380078.0	500711.0	1.34648
B02	386975.0	500308.0	1.33688
B03	388924.0	500431.0	1.32018
B04	387685.0	500434.0	1.32024
B05	380580.0	500462.0	1.33837
B06	388117.0	500599.0	1.32147
C01	388007.0	500599.0	1.32147
C02	388153.0	500687.0	1.32202
C03	390741.0	500476.0	1.32127
C04	388200.0	500675.0	1.32042
C05	390006.0	500523.0	1.35022
C06	389271.0	500520.0	1.33783
D01	389420.0	500713.0	1.34057
D02	388871.0	500790.0	1.33359
D03	388205.0	500746.0	1.32316
D04	391477.0	500428.0	1.32488
D05	380153.0	500818.0	1.35178
D06	380250.0	500791.0	1.32448
E01	388254.0	500446.0	1.34321
E02	392353.0	500558.0	1.38837
E03	392328.0	500558.0	1.38837
E04	392328.0	500558.0	1.38837
E05	392328.0	500558.0	1.38837
E06	392328.0	500558.0	1.38837
F01	380483.0	500066.0	1.38777
F02	388945.0	501153.0	1.34042
F03	389206.0	500700.0	1.33629
F04	385588.0	500218.0	1.32849
F05	387628.0	500278.0	1.31872
F06	391131.0	500470.0	1.32786
G01	380078.0	500711.0	1.34648
G02	386975.0	500308.0	1.33688
G03	388924.0	500431.0	1.32018
G04	387685.0	500434.0	1.32024
G05	380580.0	500462.0	1.33837
G06	388117.0	500599.0	1.32147
H01	388007.0	500599.0	1.32147
H02	388153.0	500687.0	1.32202
H03	390741.0	500476.0	1.32127
H04	388200.0	500675.0	1.32042
H05	390006.0	500523.0	1.35022
H06	389271.0	500520.0	1.33783
I01	389420.0	500713.0	1.34057
I02	388871.0	500790.0	1.33359
I03	388205.0	500746.0	1.32316
I04	391477.0	500428.0	1.32488
I05	380153.0	500818.0	1.35178
I06	380250.0	500791.0	1.32448
J01	388254.0	500446.0	1.34321
J02	392353.0	500558.0	1.38837
J03	392328.0	500558.0	1.38837
J04	392328.0	500558.0	1.38837
J05	392328.0	500558.0	1.38837
J06	392328.0	500558.0	1.38837
K01	380483.0	500066.0	1.38777
K02	388945.0	501153.0	1.34042
K03	389206.0	500700.0	1.33629
K04	385588.0	500218.0	1.32849
K05	387628.0	500278.0	1.31872
K06	391131.0	500470.0	1.32786
L01	380078.0	500711.0	1.34648
L02	386975.0	500308.0	1.33688
L03	388924.0	500431.0	1.32018
L04	387685.0	500434.0	1.32024
L05	380580.0	500462.0	1.33837
L06	388117.0	500599.0	1.32147
M01	388007.0	500599.0	1.32147
M02	388153.0	500687.0	1.32202
M03	390741.0	500476.0	1.32127
M04	388200.0	500675.0	1.32042
M05	390006.0	500523.0	1.35022
M06	389271.0	500520.0	1.33783
N01	389420.0	500713.0	1.34057
N02	388871.0	500790.0	1.33359
N03	388205.0	500746.0	1.32316
N04	391477.0	500428.0	1.32488
N05	380153.0	500818.0	1.35178
N06	380250.0	500791.0	1.32448
O01	388254.0	500446.0	1.34321
O02	392353.0	500558.0	1.38837
O03	392328.0	500558.0	1.38837
O04	392328.0	500558.0	1.38837
O05	392328.0	500558.0	1.38837
O06	392328.0	500558.0	1.38837
P01	380483.0	500066.0	1.38777
P02	388945.0	501153.0	1.34042
P03	389206.0	500700.0	1.33629
P04	385588.0	500218.0	1.32849
P05	387628.0	500278.0	1.31872
P06	391131.0	500470.0	1.32786
Q01	380078.0	500711.0	1.34648
Q02	386975.0	500308.0	1.33688
Q03	388924.0	500431.0	1.32018
Q04	387685.0	500434.0	1.32024
Q05	380580.0	500462.0	1.33837
Q06	388117.0	500599.0	1.32147
R01	388007.0	500599.0	1.32147
R02	388153.0	500687.0	1.32202
R03	390741.0	500476.0	1.32127
R04	388200.0	500675.0	1.32042
R05	390006.0	500523.0	1.35022
R06	389271.0	500520.0	1.33783
S01	389420.0	500713.0	1.34057
S02	388871.0	500790.0	1.33359
S03	388205.0	500746.0	1.32316
S04	391477.0	500428.0	1.32488
S05	380153.0	500818.0	1.35178
S06	380250.0	500791.0	1.32448
T01	388254.0	500446.0	1.34321
T02	392353.0	500558.0	1.38837
T03	392328.0	500558.0	1.38837
T04	392328.0	500558.0	1.38837
T05	392328.0	500558.0	1.38837
T06	392328.0	500558.0	1.38837
U01	380483.0	500066.0	1.38777
U02	388945.0	501153.0	1.34042
U03	389206.0	500700.0	1.33629
U04	385588.0	500218.0	1.32849
U05	387628.0	500278.0	1.31872
U06	391131.0	500470.0	1.32786
V01	380078.0	500711.0	1.34648
V02	386975.0	500308.0	1.33688
V03	388924.0	500431.0	1.32018
V04	387685.0	500434.0	1.32024
V05	380580.0	500462.0	1.33837
V06	388117.0	500599.0	1.32147
W01	388007.0	500599.0	1.32147
W02	388153.0	500687.0	1.32202
W03	390741.0	500476.0	1.32127
W04	388200.0	500675.0	1.32042
W05	390006.0	500523.0	1.35022
W06	389271.0	500520.0	1.33783
X01	389420.0	500713.0	1.34057
X02	388871.0	500790.0	1.33359
X03	388205.0	500746.0	1.32316
X04	391477.0	500428.0	1.32488
X05	380153.0	500818.0	1.35178
X06	380250.0	500791.0	1.32448
Y01	388254.0	500446.0	1.34321
Y02	392353.0	500558.0	1.38837
Y03	392328.0	500558.0	1.38837
Y04	392328.0	500558.0	1.38837
Y05	392328.0	500558.0	1.38837
Y06	392328.0	500558.0	1.38837
Z01	380483.0	500066.0	1.38777
Z02	388945.0	501153.0	1.34042
Z03	389206.0	500700.0	1.33629
Z04	385588.0	500218.0	1.32849
Z05	387628.0	500278.0	1.31872
Z06	391131.0	500470.0	1.32786



Legend Main Map

- WTG Layout Design Basis
- Sub Station
- Planned Interarray Cable Route
- Planned Export Cable Route
- Consented Field Outline
- Bathymetry (m rel. to LAT)
 - < -26
 - 24 -26
 - 22 -24
 - 20 -22
 - 18 -20
 - 16 -18
 - 14 -16
 - 12 -14

Dudgeon Offshore Windpark

STATIONARY REFERENCE SYSTEM
 Prime Meridian: UTM Zone 31N
 Transformation: UTM
 Datum: ETRS89

UK / North Norfolk

Scale: 1:50000

Map ID: C177-DOW-N-XE-0001-01

This map features bathymetry from seabed survey: ST13504 DOWF Sub and Seabed Mapping (2013) according to the subcontractor's error budget for this survey the accuracy is as follows:
 The (horizontal) accuracy for navigation is +/- 20 cm (horizontal determined by the dynamic position calibration for primary and secondary navigation system)
 The (vertical) accuracy bathymetry: At 20m water depth the Total Uncertainty is +/- 27cm. At 50m water depth the Total Uncertainty is +/- 33 cm.

CONSTRUCTION AND GUARD VESSEL's CONTACT DETAILS

ESVAGT NJORD



Call sign: OWZN2

Bridge Phone: VSAT.TEL: +45 32 71 26 89; / GSM: +45 32 71 26 85

E-mail: njord@esvagtvesel.com

SEA CHALLENGER



Call sign: OWLQ2

Bridge Phone: V-sat: +45 89 88 90 10

Master phone: vsat +45 89 88 90 11 / GSM +45 52 13 95 80

E-mail: seachallenger@a2sea.com / Master mast_sc@a2sea.com

VESTLAND CYGNUS



Callsign: C6BW7

Bridge Phone: VSAT.TEL: +4723677230; +4723677230 / GSM: +47 41 43 02 07

E-mail : captain.cygnus@vestlandoffshore.no ; bridge.cygnus@vestlandoffshore.no

ADVENTURE



Callsign: 2IFE4

Bridge Phone: V-sat 01947750717

E-mail: adventureGS@gmail.com / adventure.guard1@gmail.com

Resolute



Callsign: MLPD5

Bridge Phone: +44 284 179 8209

E-mail: resolute.guard1@gmail.com

GV Kristenborg



Callsign: VQBG9

Bridge Phone: Sat. Phone: 00881677723605, mobile: 07786554685

E-mail: kristenborg@e-catch.co.uk

M/V ICEBEAM



Callsign: SFKH

Bridge Phone: +46 (0)31 33 44 750 (Vsat) / +46 (0)738 53 92 67 (GSM)

E-mail: captain-icebeam@mmt.se